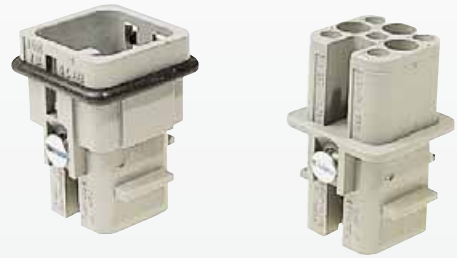


Number of contacts

7 +



Inserts

Han D/DD

Identification	Series	Part No.		Drawing	Dimensions in mm
		Male insert (M)	Female insert (F)		
Crimp terminal Order crimp contacts separately	Han D®	09 21 007 3031¹⁾	09 21 007 3131¹⁾	M F 	Contact arrangement View from termination side
Coding system with loss of contact 		09 33 000 9915	To avoid accidental incorrect mating of adjacent connectors a coding system is required. Coding is effected by means of a code pin to be inserted into the selected chamber of the female insert. The opposite male contact should be omitted. 		

Identification	Wire gauge (mm ²)	Part No.		Drawing	Dimensions in mm																					
		Male contacts	Female contacts																							
Crimp contacts silver plated	0.14-0.37 0.5 0.75 1.0 1.5 2.5	09 15 000 6104 09 15 000 6103 09 15 000 6105 09 15 000 6102 09 15 000 6101 09 15 000 6106	09 15 000 6204 09 15 000 6203 09 15 000 6205 09 15 000 6202 09 15 000 6201 09 15 000 6206		<table border="1"> <thead> <tr> <th>Wire gauge</th> <th>∅</th> <th>Stripping length</th> </tr> </thead> <tbody> <tr> <td>0.14-0.37 mm²</td> <td>AWG 26-22</td> <td>0.90 mm</td> </tr> <tr> <td>0.5 mm²</td> <td>AWG 20</td> <td>1.10 mm</td> </tr> <tr> <td>0.75 mm²</td> <td>AWG 18</td> <td>1.30 mm</td> </tr> <tr> <td>1 mm²</td> <td>AWG 18</td> <td>1.45 mm</td> </tr> <tr> <td>1.5 mm²</td> <td>AWG 16</td> <td>1.75 mm</td> </tr> <tr> <td>2.5 mm²</td> <td>AWG 14</td> <td>2.25 mm</td> </tr> </tbody> </table>	Wire gauge	∅	Stripping length	0.14-0.37 mm ²	AWG 26-22	0.90 mm	0.5 mm ²	AWG 20	1.10 mm	0.75 mm ²	AWG 18	1.30 mm	1 mm ²	AWG 18	1.45 mm	1.5 mm ²	AWG 16	1.75 mm	2.5 mm ²	AWG 14	2.25 mm
Wire gauge	∅	Stripping length																								
0.14-0.37 mm ²	AWG 26-22	0.90 mm																								
0.5 mm ²	AWG 20	1.10 mm																								
0.75 mm ²	AWG 18	1.30 mm																								
1 mm ²	AWG 18	1.45 mm																								
1.5 mm ²	AWG 16	1.75 mm																								
2.5 mm ²	AWG 14	2.25 mm																								
gold plated	0.14-0.37 0.5 0.75 1.0 1.5 2.5	09 15 000 6124 09 15 000 6123 09 15 000 6125 09 15 000 6122 09 15 000 6121 09 15 000 6126	09 15 000 6224 09 15 000 6223 09 15 000 6225 09 15 000 6222 09 15 000 6221 09 15 000 6226																							
FOC contacts for 1 mm plastic fibre		20 10 001 3212	20 10 001 3222																							

Stock items in bold type

Han
A

Identification		Part No.	M	Drawing	Dimensions in mm		
Hoods	Hoods side-entry	grey 19 20 003 0620	20				
		black 19 20 003 0627	20				
	Hoods top-entry	grey 19 20 003 0420 19 20 003 0423	20 20				
		black 19 20 003 0427 19 20 003 0426	20 20				
	Protection covers for hoods		09 20 003 5442 ¹⁾ 09 20 003 5441 ²⁾				
	Housings	Housings bulkhead mounting	grey 09 20 003 0320	—			
grey 09 20 003 0820			—				
Housings surface mounting		grey 19 20 003 0220	20				
Hoods cable to cable		grey 19 20 003 0720 black 19 20 003 0727	20 20				
Protection covers for housings		A 09 20 003 5407 ¹⁾³⁾ 09 20 003 5408 ²⁾³⁾ B 09 20 003 5446 ¹⁾ 09 20 003 5445 ²⁾ C 09 20 003 5448 ¹⁾					

¹⁾ for mounted male insert
²⁾ for mounted female insert
³⁾ for metal housings and cable to cable hoods also

Stock items in bold type