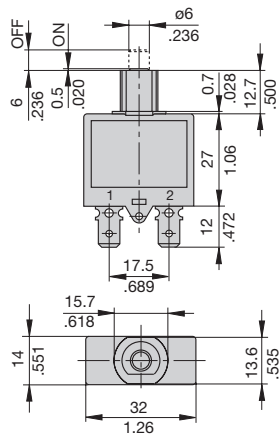


Dimensions

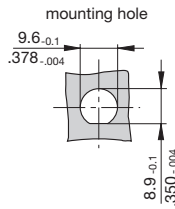
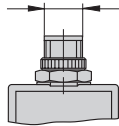


A00



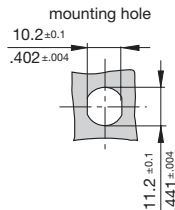
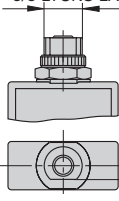
A21

tightening torque max. 0.8 Nm
3/8-27UNS-2A



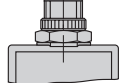
G21

tightening torque max. 0.8 Nm
3/8-27UNS-2A



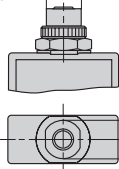
A41

10
.394



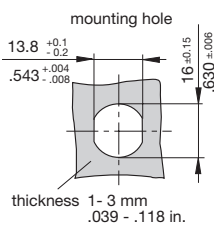
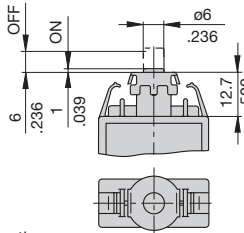
G41

10
.394



7/16-28UNS-2A
double "D"
tightening torque max. 0.8 Nm

F01

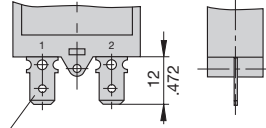


Caution:
Please keep a tight grip on the unit
while removing the female connectors.

See ordering information for mounting hardware.

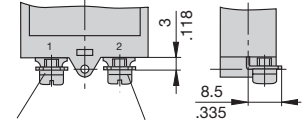
Terminal design

P10



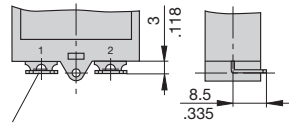
blade terminals DIN 46244-A6.3-0.8
(QC .250)

S83



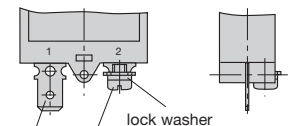
terminal screw
6-32 UNC
lock washer

P13



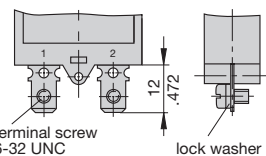
blade terminals DIN 46244-A6.3-0.8 (QC .250)
angled 90°

P10-S83



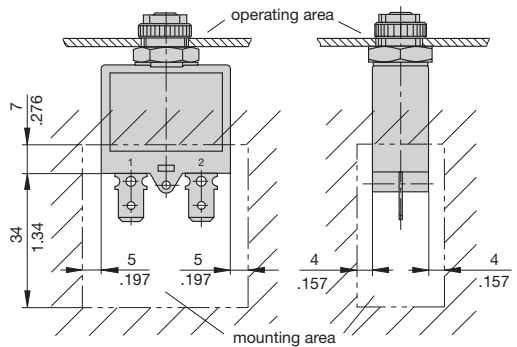
terminal screw
6-32 UNC
lock washer

S80



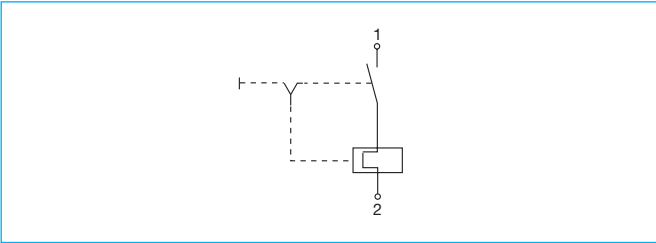
blade terminals
DIN 46244-A6.3-0.8 (QC .250)

Installation drawing

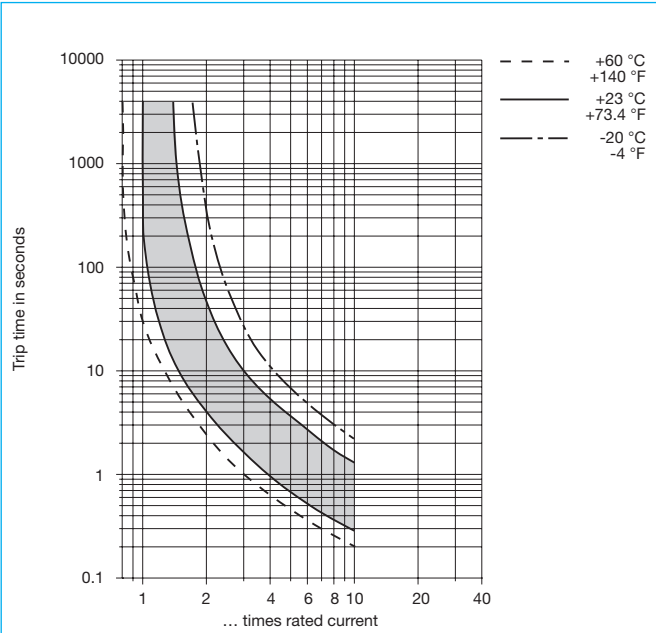


This is a metric design and millimeter dimensions take precedence (mm/inch)

Internal connection diagram



Typical time/current characteristics

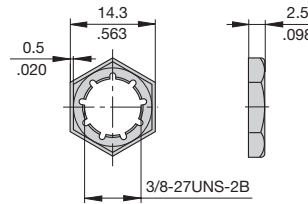


The time/current characteristic curve depends on the ambient temperature prevailing. In order to eliminate nuisance tripping, please multiply the circuit breaker current ratings by the derating factor shown below. See also section 9 – Technical information.

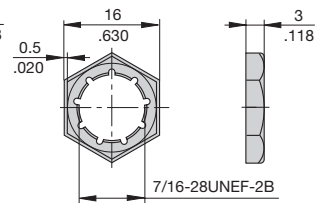
Ambient temperature °F		-4	+14	+32	+73.4	+104	+122	+140
°C		-20	-10	0	+23	+40	+50	+60
Derating factor	$I_N > 7A$	0.83	0.85	0.9	1	1.1	1.18	1.25
	$I_N \leq 7A$	0.74	0.76	0.82	1	1.23	-	-

Accessories

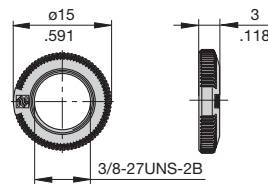
Mounting nut 3/8", 27-thread
Y306 671 01



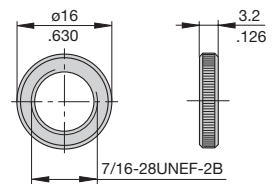
Mounting nut 7/16", 28-thread
Y303 200 01



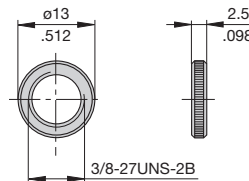
Knurled nut 3/8", 27-thread plastic (standard)
Y307 117 02



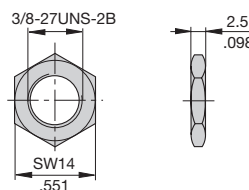
Knurled nut 7/16", 28-thread nickel-plated brass
Y302 294 03



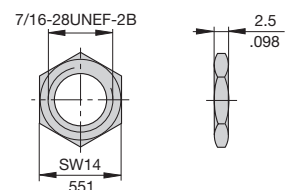
Knurled nut 3/8", 27-thread nickel-plated brass
Y300 190 03



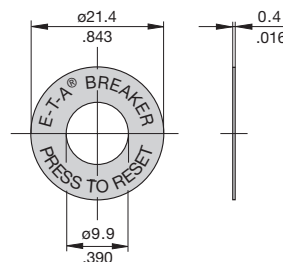
Hex nut 3/8", 27-thread nickel-plated brass
Y300 192 01



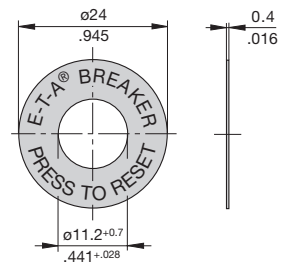
Hex nut 7/16", 28-thread nickel-plated brass
Y302 295 01



Press to Reset Plate for 3/8" thread, aluminium
Y 301 059 02



Press to Reset Plate for 7/16" thread, aluminium
Y 302 732 01

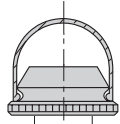


This is a metric design and millimeter dimensions take precedence ($\frac{mm}{inch}$)

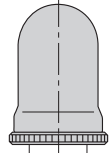
Accessories

Reset button seal for 3/8", 27-thread,
short
X201 285 01

long
X200 799 01



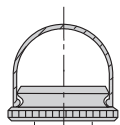
3/8-27 UNS-2B



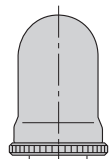
3/8-27 UNS-2B

Reset button seal for 7/16", 28-thread,
short
X222 119 01

long
X222 119 02



7/16-28 UNS-2B



7/16-28 UNS-2B

All dimensions without tolerances are for reference only. In the interest of improved design, performance and cost effectiveness the right to make changes in these specifications without notice is reserved. Product markings may not be exactly as the ordering codes. Errors and omissions excepted.